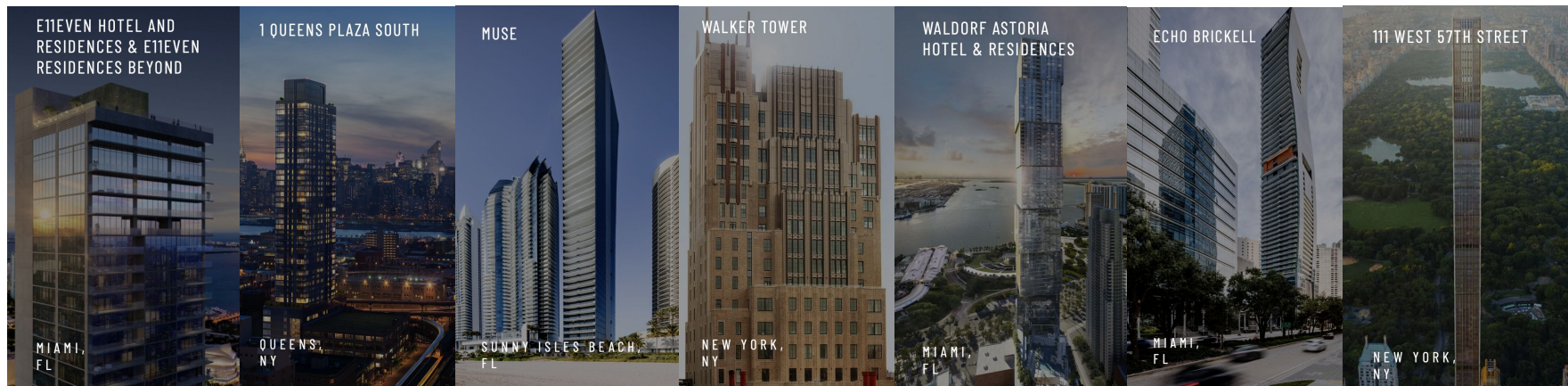


PMG

RESIDENTIAL

Founded in 1991 by Kevin Maloney and led by managing partners, Ryan Sheer and Dan Kaplan, PMG has grown from a local real estate operator in New York City to a national investment, development and asset management firm operating across Florida, New York, Colorado, South Carolina, Tennessee and Georgia.

Our current multi-billion dollar portfolio includes assets across pre-development, construction, lease-up, and sell out, totaling more than 8,500 residential units and over 16 million square feet development.



SOCIETY

Residences Miami

Connect and elevate neighbors through inclusive and inspiring shared living experience.

Society Living apartments communities enable meaningful connections in today's bustling urban centers. Efficiently designed luxury homes grant access to inspiring shared spaces that host enriching events.



SOCIETY
ORLANDO



SOCIETY
WYNWOOD



SOCIETY
NASHVILLE



SOCIETY
ATLANTA

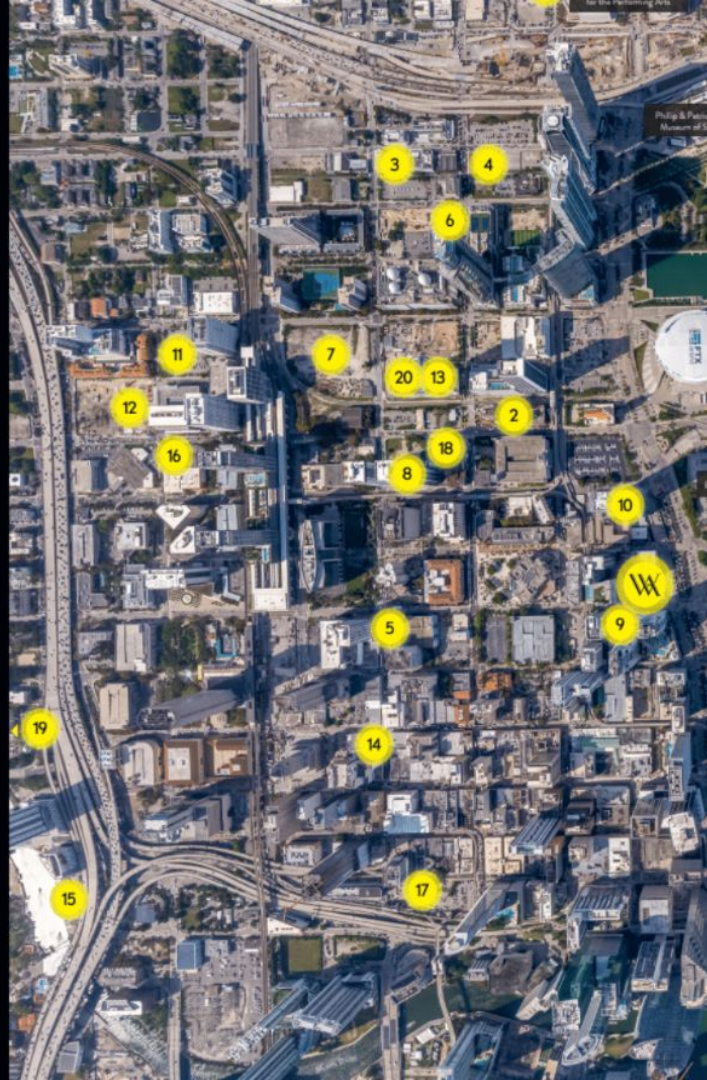
Downtown Miami's Landscape of the Future

\$9.2B in investment over the next 5 years



New Developments / Hotels - \$7.5 BILLION

- 1 **Waldorf Astoria**
PMG • 400 N Biscayne Blvd • Mixed-use • \$1B
- 2 **Natiivo Miami**
Sixth Street Developers • 159 NE 6th Street • 44 Units - Residential Airbnb • \$230M
- 3 **E11EVEN Hotel & Residences Miami**
PMG & E11even Partners • 20 NE 1st St • 400 Residential Units • \$225 MIL
- 4 **E11EVEN Beyond**
PMG & E11even Partners • 21 NE 1st St • 400 Residential Units • \$225 MIL
- 5 **The District**
The Related Group • 233 N Miami Ave • Residential Condos w Airbnb • \$172M
- 6 **Legacy Hotel & Residences**
Royal Palm Companies • 942 NE 1st Ave • Mixed-use • \$100M
- 7 **Miami Arena Site at WorldCenter**
Wilcoff Group & Monroe Capital • 700 N Miami Ave • Usage TDB • \$94M
- 8 **Downtown 5th**
Melo Group • 55 NE 5th St • Mixed-use • \$90M
- 9 **YotelPad Miami**
Aria Development Group • 227 NE 2nd St • Mixed-use • \$85M
- 10 **Society Biscayne**
PMG & Greybrook • 400 Biscayne Blvd • Rental • 646 Units • \$150M
- 11 **Block 45**
Atlantic Pacific Communities • 152 NW 8th St • Mixed-use • \$70 MIL
- 12 **Block 55**
Swerdlow Group, SJM Partners, Alben Duffie • 249 NW 6th St • Mixed-use • \$6M
- 13 **Downtown 1st**
Melo Group • 698 NE 1st Ave • Mixed-use • \$60M
- 14 **Grand Central Tower**
Rovr Development • 240 N Miami Ave • Rental • \$53M
- 15 **Nexus Riverside**
Adler Group • 230 SW 3rd St • Mixed-use • \$50M
- 16 **Miami Station**
The Related Group • 525 NW 2nd Ave • Mixed-use • \$85M
- 17 **Old Lynx Site**
Enrique Manhard • 16 SE 2nd St • \$46M
- 18 **501First Residences**
Aria Development • 501 NE 1st Ave • Residential • \$100M
- 19 **TBD**
Moishe Mana • 491 NW 1st St • Residential • \$12.3M
- 20 **The Crosby**
The Related Group/Merrimac • Residential • \$225M
- 21 **1400 Biscayne**
The Related Group • 1400 Biscayne Blvd • Residential/Mixed-use • \$5M



Commercial - \$147 MILLION

- 1 **Jewelry Mall**
Jewelry Mall • \$50M
- 2 **Jill & Henry's**
Sambu • 200 East Flagler • Food Hall, Offices, Rooftop • \$35M
- 3 **41 East Flagler**
Moishe Mana • \$27.2M
- 4 **Nikola Tesla Innovation Hub**
Moishe Mana • \$15M
- 5 **Publix**
New Publix At Brightline's 3 MiamiCentral In Downtown Miami • \$10M
- 6 **Watson Building**
Moishe Mana • \$6.825M
- 7 **62 Northeast First Street**
Moishe Mana • Multi-level dining and entertainment venue
- 8 **Mana Common**
Moishe Mana • Partnership with a tech platform called Plug and Play for events
- 9 **MiamiCentral**
Chick-Fil-A • Grand floor MiamiCentral



Redevelopment - \$936 MILLION

- 1 **I-395 Signature Bridge**
Under construction • Scheduled completion for Fall 2024 • \$818M
- 2 **Brickell Tunnel**
In pre-development • \$30M
- 3 **Bayside Marketplace**
Private operator has committed to improvements • \$27M
- 4 **Flagler Street Beautification Project**
Under construction • Outdoor dining areas, public art, and smart city technology • \$20.5M
- 5 **Miami World Center (new tenants)**
Restaurateurs Michael Beltran (2 restaurants), Danny Grant (2 restaurants) • \$20M
- 6 **Skyviews Miami**
Construction completed • \$10M
- 7 **Scramble Crosswalk**
Construction completed at the intersection of NE 1st Ave. & NE 2nd St. • \$5M
- 8 **Solar Tree**
Installation completed and collecting solar power at Bayfront Park • \$5M



**RENTALS BUILDINGS
DOWNTON MIAMI**

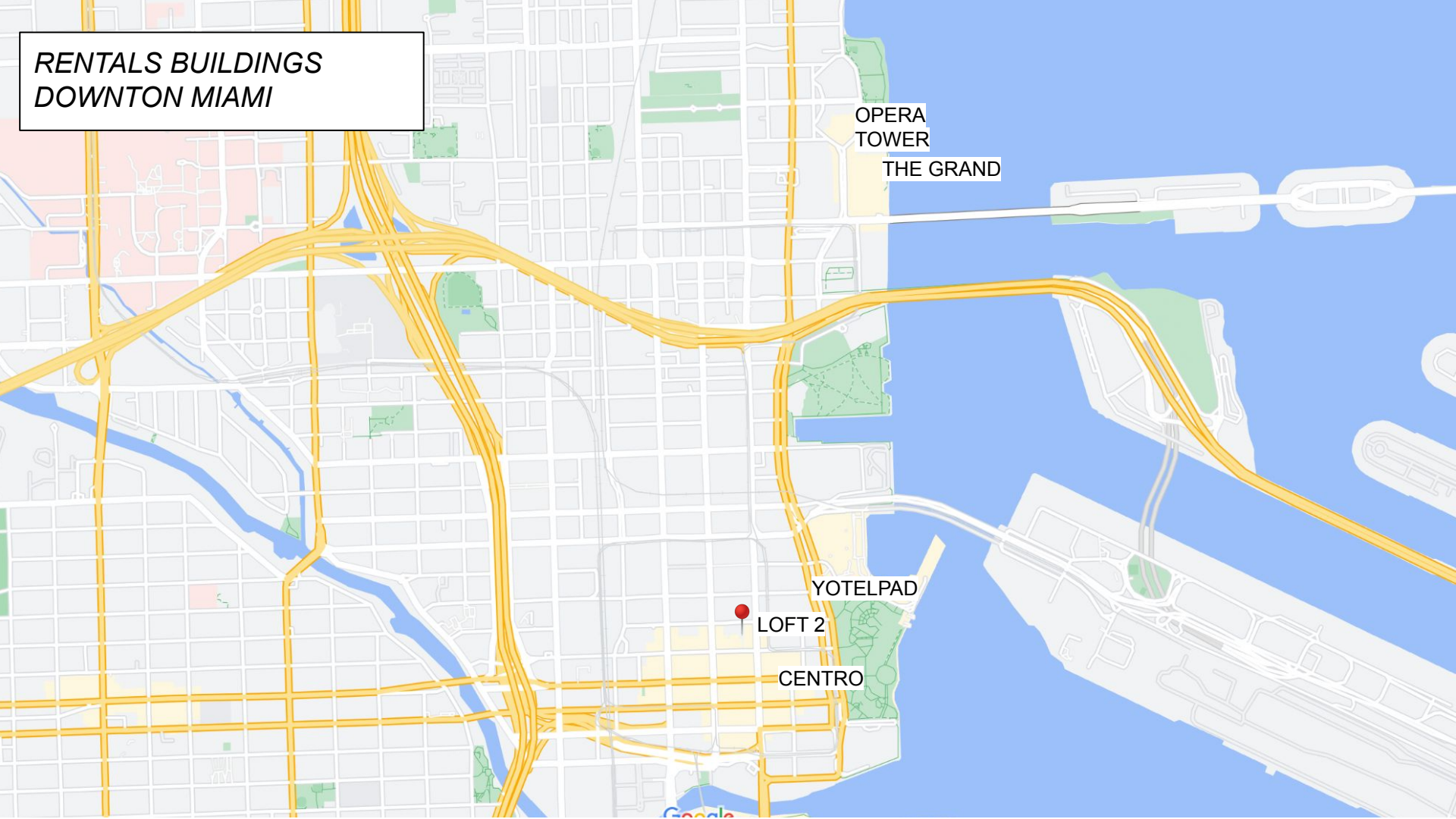
OPERA
TOWER

THE GRAND

YOTELPAD

LOFT 2

CENTRO





BUILDING FEATURES

- 49-story tower located in Downtown Miami
- Designed by internationally renowned architecture firm Sieger Suarez Architects.
- Views of Miami skyline, unobstructed views of Biscayne Bay and the Atlantic Ocean.
- Modern residential lobby with 24/7 concierge service.
- Electric vehicles charging stations.
- Features the latest smart building technology.
- Custom Society Residences app.
- Access-controlled entry points throughout.
- Valet parking.



14-47, Residences

10,000+ gym space - 2 Levels

11, 12 & 13 - Commercial Spaces

Pool Deck - Grilling Terrace (8 BBQ)
Deck - Lawn - Yoga - Skybar

Spa - Oversized hot tub

Dan Le Batard Recording Studio
Co-working spaces - Cafe Domino

Lobby - Jaguar Sun Restaurant
Reception - Lounge



Lobby - Concierge



Co-working Spaces



Cafe Domino

CAFÉ **Domino**



Pool Deck



Pool Deck - Grilling Terrace



Wooden Deck - Yoga



Lawn - Sky Lounge

Spa - Oversized hut tub





Gym - Fitness Center



2 level Gym - Fitness Center



Gym - Fitness Center
Cardio

SOCIETY

Biscayne

- STUDIO
- 1 BEDROOM
- 2 BEDROOMS
- 3 BEDROOMS



ALL INFORMATION SUBJECT TO CHANGE WITHOUT NOTICE.

NORTHEAST VIEW



SOUTHEAST VIEW



NORTHWEST VIEW



SOUTHWEST VIEW



SOCIETY

Residences Miami

ATELIER & HAUTE COLLECTION

- Ready for immediate occupancy
- Rentals available yearly or through Rental program

Floors:

14 - 20

37 - 47

BOHEME COLLECTION

- Tenant Occupied for 1 year
- 2 years of maintenance credit
- 2 years of taxes credit

Floors:

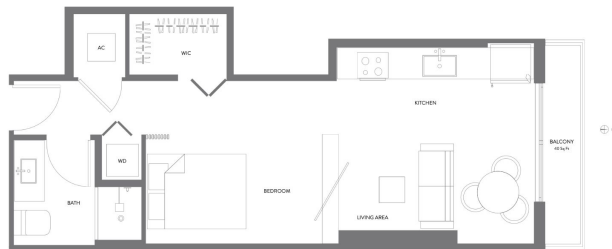
21 - 36

SOCIETY
Residences Miami

RESIDENCE 05

JR. SUITE | 1 BATH
LEVELS 14 - 47

LIVING AREA	492 SQ FT	45.70 M ²
BALCONY	40 SQ FT	3.71 M ²
TOTAL	532 SQ FT	49.42 M ²



RESIDENCE 05

RESIDENCE LINE 05

STUDIOS

Starting at \$670,000

RESIDENCE LINE 10

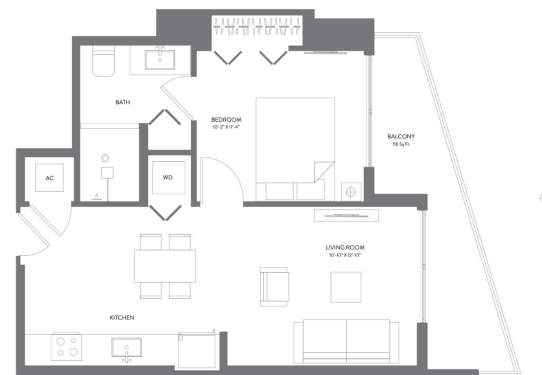
1 BEDROOM
Starting at \$800,000

SOCIETY
Residences Miami

RESIDENCE 10

1 BEDROOM | 1 BATH
LEVELS 14 - 47

LIVING AREA	572 SQ FT	48.49 M ²
BALCONY	116 SQ FT	10.77 M ²
TOTAL	688 SQ FT	63.91 M ²



RESIDENCE 10

SOCIETY
Residences Miami

RESIDENCE 17

2 BEDROOMS | 3 BATHS + DEN
LEVELS 20 - 47

LIVING AREA	1,349 SQ. FT.	106.74 M ²
BALCONY	105 SQ. FT.	9.75 M ²
TOTAL	1,254 SQ. FT.	116.50 M ²



RESIDENCE LINE 17

2 BEDROOMS

Starting at \$1.4M

RESIDENCE LINE 01

3 BEDROOMS

Starting at \$1.5M

SOCIETY
Residences Miami

RESIDENCE 01

3 BEDROOMS | 3 BATHS
LEVELS 14 - 47

LIVING AREA	1,307 SQ. FT.	121.42 M ²
BALCONY	226 SQ. FT.	20.99 M ²
TOTAL	1,533 SQ. FT.	142.42 M ²





‘Building the Future of Hospitality’

Why we’re here?

- Sonder is changing the game. With spaces that inspire and delight, that fulfill need without sacrificing style, all while delivering seamless, personalized experiences. We deliver hospitality that’s both remarkable and accessible.

Sonder Today

- 35+ Cities in 10 countries
- Approximately 6,300 units live worldwide
- 1M+ guests



8 NEIGHBORHOODS
Chicago



4 NEIGHBORHOODS
Miami



14 NEIGHBORHOODS
London



10 NEIGHBORHOODS
New Orleans



4 NEIGHBORHOODS
New York City



5 NEIGHBORHOODS
Minneapolis



5 NEIGHBORHOODS
Montreal



6 NEIGHBORHOODS
Nashville



1 NEIGHBORHOOD
Nice



3 NEIGHBORHOODS
Phoenix



13 NEIGHBORHOODS
Rome



4 NEIGHBORHOODS
San Antonio



6 NEIGHBORHOODS
San Diego



2 NEIGHBORHOODS
Dubai



2 NEIGHBORHOODS
Dublin



1 NEIGHBORHOOD
Edinburgh



1 NEIGHBORHOOD
Glasgow



3 NEIGHBORHOODS
Orlando



1 NEIGHBORHOOD
Palm Springs



1 NEIGHBORHOOD
Paris



8 NEIGHBORHOODS
Philadelphia



1 NEIGHBORHOOD
San Francisco



1 NEIGHBORHOOD
Savannah



1 NEIGHBORHOOD
Seattle



5 NEIGHBORHOODS
Toronto



6 NEIGHBORHOODS
Houston



1 NEIGHBORHOOD
Los Angeles

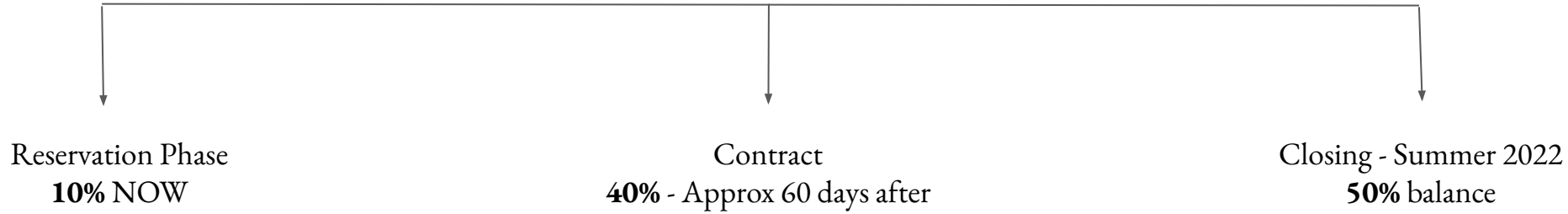


1 NEIGHBORHOOD
Madrid



2 NEIGHBORHOODS
Mexico City

Payment Structure



CRYPTO ASSETS ACCEPTED